



1946

QUADRANGLE



LD
2891
.L3
Q5
1946
C.3



Frank & Laura Lewis
Library



LAGRANGE
COLLEGE



Digitized by the Internet Archive
in 2014

<https://archive.org/details/quadrangle1946lagr>



Presenting





*The
Quadrangle*

1946 EDITION

PUBLISHED BY THE SENIOR CLASS
LAGRANGE COLLEGE, LAGRANGE, GEORGIA
FRANCES ROUNTREE, EDITOR, AND
MARY LAURA STARR, BUSINESS MANAGER

Here it is

Presented here are a hundred and fifty girls, their advisers and their teachers, as they strive to fit themselves for service to society. Here they are at work and at play. Here are their activities and their accomplishments. Here is our interpretation of life on the Hill, permeated with the friendship, the loyalty, and the selfishness^{less} that characterize the L. C. Spirit.

FRANCES ROUNTREE, *Editor*

MARY LAURA STARR, *Business Manager*



THE QUADRANGLE SALUTES



MISS CARRIE FALL BENSON

COLLEGE LIBRARIAN

*They will come back, when I no longer climb
The hill to keep my daily rendezvous;
In that approaching, dreamy, twilight time,
They will come back, the girls I loved and knew.
Their flower-like names will sing themselves to me,
Margaret . . . and Jean . . . and Gwendolyn . . .
They will come back to keep me company,
I will fling wide the door, and let them in.
As once I opened books before their eyes,
And led them into far enchanted places,
Watching the white fire strike, the dreams arise,
Brightening the beauty of their faces.*

*When I am old, and seek my desk no more,
They will come back in memory to my door.*

CARRIE FALL BENSON

Critic, playwright, poet, friend—because we are proud of her, because we love her, we affectionately dedicate this book to Miss Carrie Fall.

IN A COLLEGE LIBRARY

*Here, for Youth, is stored the wisdom of the ages;
Secrets of science, mysteries of art,
Await the questing mind and eager heart
Of those who would explore these priceless pages.
Here the young dreamers, lifting glowing eyes
From open books, may look upon far places;
May feel the wind of fancy in their faces,
And stand a moment underneath strange skies.*

*Here history sounds the rumble of old wars;
And romance voices that which once was said,
In words that echoed to the singing stars,
Uttered by poets who have long been dead;
But more than all that has been said or sung,
Are they who seek this place—they are The Young!*

CARRIE FALL BENSON



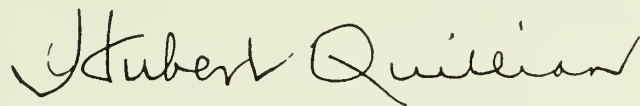
The College



OUR PRESIDENT

To the members of the Class of 1946, I bring this word of felicitation. As the atomic bomb ended the war and brought an end to an era, so may the atomic age usher in a thousand years of peace. The implication of the mission of the atom is the greatest incentive mankind has known for world brotherhood, or total destruction. It must be one world or none. Swift-winged flight in this age has brought the world into a neighborhood overriding national boundaries and barriers—yesterday for bombing, shall tomorrow be for blessing? We must answer today. Quick communication encircles the globe and makes of the world a whispering gallery. Would that its message might be "What wonders God hath wrought." As you enter this atomic age with all its opportunities and responsibilities, "May the new occasion teach new duties, that make the ancient good uncouth. May you be ever up and onward as you keep abreast of truth." Be assured of my great pride in you and my great concern for your happiness always.

Sincerely,

A handwritten signature in cursive script that reads "Hubert Quillian". The signature is written in dark ink and is centered below the typed name.



ERNEST AUBREY BAILEY, A.B., M.S.
*Dean, Registrar and Professor
of Mathematics*



LUCILLE BRYANT JOHNSON
Dean of Women

LUCIE BILLANT, A.B., M.A.
*Professor of French
and Spanish*

JENNIE LEE EPPS, A.B., A.M., PH.D.
Professor of English

KATE HOWARD CROSS, A.B., A.M.
*Professor of Latin
and English*



PAULINE K. SMITH, A.B., M.S.P.H., M.ED.
Professor of Biology and Chemistry

EMMIE DURHAM, B.S., M.S.
Director of Home Economics

SARAH McCULLOH LEMMON, B.S., M.A.
Professor of History



DAVIS P. MELSON, A.B., B.D., M.A., PH.D.
Professor of Religion

WESTON LAFAYETTE MURRAY,
A.B., M.A., PH.D.
Professor of History



KATHRYN TERRELL CLINE, A.B.
Teacher of Piano

EDWIN GERSCHEFSKI, Pianist
Guest Artist

ELIZABETH GILBERT
Teacher of Voice





IRENE E. ARNETT, A.B., M.A.

Director of Speech

VERDIE MILLER, A.B., A.M.

Professor of Mathematics and Education



MRS. CLARENCE DAY, SR.

Bookkeeper

EVELYN WARDE MURPHY

Housemother



JEAN MCDANIEL, A.B.

*Secretary to the
President and
Assistant in
Secretarial Science*

EDITH SESSIONS,
B.S.P.E.

*Director of
Physical Education*

Not in picture:

CARRIE FALL BENSON

Librarian

JAMES B. BLANKS, B.S., M.A.

*Professor of Education
and Psychology*

*(Now on leave with Veterans
Administration)*

ROSA MULLER

Teacher of Piano



BIRDIE LEE LOVITT

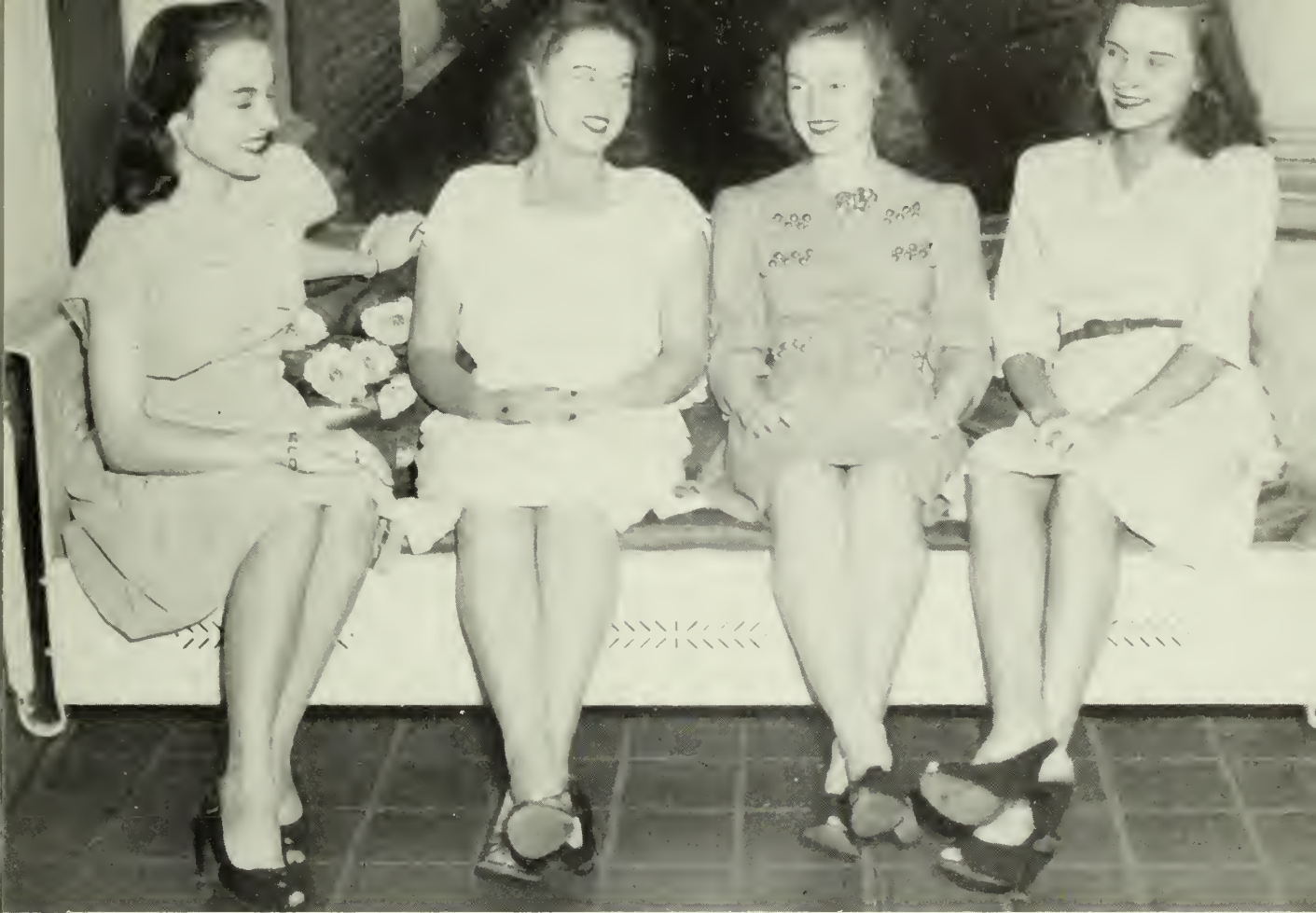
Dietitian

IONA DILLEY, A.B.

*Director of
Secretarial Science*

ALICE ATWOOD WILLIAMS,
B.A.E., M.A.

Director of Art



WISE

BARBOUR

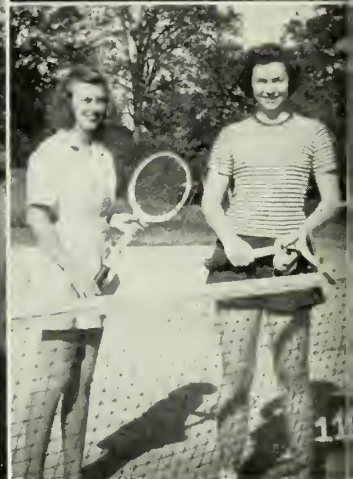
FOSTER

MARTIN

SENIORS

OFFICERS

JUNE BARBOUR	President
SARAH FOSTER	Vice-President
MAYRE LOU WISE	Treasurer
MARY MARTIN	Secretary



1. Martin poses.
2. The first Sunday.
3. The President primps.
4. After the game.

5. Bull's eye!
6. In the Garden.
7. Gla - mour.
8. Before lunch.

9. Jean and Hazel.
10. Betty.
11. Who won?



Their Sponsor
MISS LUCIE BILLANT



Their Mascot
SHELLEY FORRESTER



JUNE BARBOUR Atlanta, Ga.

June has definitely distinguished herself ever since the day she first entered the portals of LaGrange College. She was named "Miss LaGrange College." She was the only member of her class to be elected a Superlative both her junior and her senior years, and the only member to be elected to the "Scroll of Fame" as a freshman. June has a double major in English and Speech, and she's one of our favorite actresses. We're steering her to broader fields—she's Pasadena bound. If she makes as big a hit there as she's made at L. C., some day we'll all be proud to say, "I knew her when."

MARY MARTIN Conyers, Ga.

Mary transferred from West Georgia College when she was a sophomore. These three years she has sung her way into the hearts of the College. She's made a place for herself here that nobody else can fill. Her major is voice. Luck to you, Mary. We'll miss you. You've won your niche in our Hall of Memory.

JULIA TRAYLOR Augusta, Ga.

Julia and her vivacious personality have become a tradition on the Hill. Her genuine friendliness and fun-loving disposition have made her a favorite among her classmates. Four years ago Julia was the girl chosen from the class of '46 to represent "Miss Freshman." We know her magnetic personality will carry her far and assure her a host of friends in the big world after graduation.

FRANCES ROUNTREE Jonesboro, Ga.

We might easily call Rountree one of the brains of the senior class. Her majors are Mathematics and French, and she's been a member of the Honor Club since she was a sophomore. She was the only member of her class to be elected to "Who's Who" when she was a junior. Her classmates have spent four happy years with her and do not covet her honors. She justly deserves them.

MARY EDDIE CARTER Ellaville, Ga.

To do easily that which is difficult for others is the mark of talent. Mary Eddie doesn't sing in the choir or play concertinas on recitals, but her talents are not limited. She has great ability to make friends, and she feels at home with a softball or a test tube in her hand, because her major is chemistry and she's very good at sports. As a Curtain Raiser, she deftly works the lights in all the plays.

BETTY LEWIS Kennesaw, Ga.

Her specialty has been athletics right from the start. Betty and tennis—they belong together. She wields a powerful racquet. As president of the Athletic Association Betty has certainly helped to promote an interest in athletics and to develop a spirit of good sportsmanship among L. C. girls. Her ready smile has won her many friends on the Hill. We know she'll have them wherever she goes.

SARAH FOSTER Dallas, Ga.

Suppose your big sister preceded you at your Alma Mater, and did it with honors—what would you do? A difficult problem for some, but not for Sarah. She just followed in her sister's path and added some things on her own. She decided on mathematics as her major. Her quiet manners and sunny disposition have endeared her to L. C.

MAYRE LOU WISE Manchester, Ga.

"If silence is golden," I heard her say, "I'll land in the house for the poor some day." Speaking generally, Mayre Lou's generally speaking. She can usually be found right in the midst of whatever's going on among the seniors. Her sense of humor, generosity, and friendly manner have made her a popular figure on the Hill. She has a double major, English and General Science. Your friends on the Hill will miss you, Mayre Lou. Just be yourself, that's the way we like you.





ANN RAINEY Waycross, Ga.

Someone must have told Ann that "the way to a man's heart is through his stomach." Anyway, she's got her man now and we're sure she can keep him because she really knows the art of homemaking. As you may have surmised, Ann's major is Home Economics. We think Ann is tops—capable, sincere, and always ready to lend a helping hand.

MARY LAURA STARR Albany, Ga.

Remember the rhyme, "Twinkle, twinkle, little star. How I wonder what you are?" None of us have to wonder what Twink is, though. We know she's one of the brightest Starrs. Because of her lovely voice, she has had an active career in music during her college days. In addition to voice, she has a major in Religious Education. Keep a' shining, Twink!

JEAN LOFTIN Newnan, Ga.

We know that important things may be in small packages; so may important people be small in stature. There is certainly an example on the Hill. Jean, president of the Student Government this year, is very important to all of us. Quiet and modest and very efficient, Jean showed us long ago that she can always be relied upon to come through. In addition to her dependability, her generous friendship has endeared her to L. C.

BETH GUNTER Greenville, S. C.

Beth is one who is faithful to her studies, her work, and her friends. One of her greatest loves is French, which is what she chose for her major. We know her perseverance will carry her far, and her willingness to work will find her a big spot in whatever she chooses.

THELMA BAUMGARDNER . . . Rural Retreat, Va.

Thelma has been with us on the Hill for two years. She spent her first two years at Hiwassee College in Tennessee, where she was a member of the Phi Theta Kappa national fraternity. Her major is Religious Education. Sometimes she's very quiet, but her actions speak louder than her words, and she accomplishes many things.

EDNA BRANNAN LaGrange, Ga.

Edna has been one of the bright spots in the Town Girls Club these four years. She has actively supported all its projects as well as those of the other organizations to which she belongs. We have come to recognize her as a conscientious worker and to appreciate her sensitive nature and fun-loving personality.

HAZEL CANNON Trion, Ga.

Hazel's friendly smile and cheerful disposition have won for her a place in each of our hearts. We might add also that her intelligence and hard work have won for her a permanent place on the Dean's List and in the Fine Arts Honor Club. Her majors are piano and English. We're proud of you, Hazel, and we wish for you all sorts of success and happiness.

ETHELIDIA PENTON LaGrange, Ga.

Etheldia is another Town Girl of whom we're very proud. She has established her place through her work in the Home Economics Club and the Art Club. There is no question about her efficiency and her friendly willingness to cooperate.



What They Did



Barbour

JUNE BARBOUR was a Delta Phi Delta and represented her sorority on the inter-sorority council when she was a junior. As a freshman she was chosen for OF and belonged to the Junior Glee Club and the Dance Club. She was president of her class all four years. She was on the *Scroll* staff three years—assistant advertising manager as a sophomore, advertising manager as a junior, and editor as a senior. She was a member of the L Club for three years. She was sophomore representative to the May Court; associate editor of the *QUADRANGLE* as a junior, secretary of the Y as a sophomore and vice-president as a

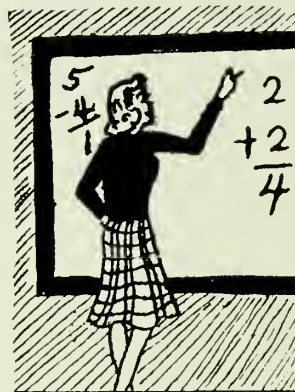
junior. She was a member of the IRC. She was active in the Curtain Raisers all four years, serving as secretary her junior year and president her senior year. She was a member of Alpha Psi Omega for three years, being treasurer as a junior and president as a senior. She belonged to the Capital City Club and was on the "Scroll of Fame." She was chosen as a Superlative both her last two years and was elected to "Who's Who" as a senior.



Penton

ETHELDIA PENTON was a Delta Phi. She belonged to the Town Girls Club all four years. She belonged to the Art Club, serving as its treasurer her sophomore and junior years and vice-president her senior year. She belonged to the Home Economics Club and was a member of the MSM.

SARAH FOSTER was a Delta Phi. She was chosen for OF, was freshman representative to the Student Council and was its treasurer the following year. She sang with the Junior Glee Club her first two years, and the Chapel Choir, the Concert Choir and the Sextet her last two. As a junior she was class treasurer and represented her class in the May Court. Her senior year she belonged to the IRC and the Tennis Club and was vice-president of her class.



Foster

THELMA BAUMGARDNER belonged to the Alpha Kappa Theta sorority. As a junior she was a member of the Art Club. When she was a senior, she joined the Curtain Raisers and the Concert Choir. She was a member of the Methodist Student Movement.



Baumgardner

2 A.M.



Gunter

BETH GUNTER was a Kappa Phi Delta. As a junior she served as its treasurer and as a senior, she was its president. When she was a freshman she was a member of the Home Economics Club and the Junior Glee Club. She was a Curtain Raiser her last two years. She was music chairman for the Y when she was a junior. She was elected senior representative to the Student Council and also served on the Inter-sorority Council her last year.



Brannan

EDNA BRANNAN was a Kappa Tau Theta. She was a member of the Town Girls Club all four years. She was its treasurer when she was a junior. She belonged to the B. S. U. She was a member of the IRC her last two years, and she joined the Art Club as a senior.

BETTY LEWIS was a Delta Phi, being its vice-president her senior year. When she was a freshman she belonged to the Junior Glee Club and the Camera Club. In her freshman and sophomore years she was a member of the Home Economics Club. She belonged to the Methodist Student Movement. She was in the Senior Dance Club her last two years and for two years she was in the Tennis Club and the L Club. When she was a junior she was secretary of the Athletic Association and when she was a senior, she was its president. She was in the IRC her last two years. As a senior, she was an honorary member of the Student Council and was chosen as one of the Superlatives.



Lewis

HAZEL CANNON was a member of the Alpha Kappa Theta sorority and was its treasurer when she was a sophomore. She also represented it on the Inter-sorority Council. She belonged to the Quill Drivers Club. When she was a freshman she was a member of the Junior Glee Club and she became a member of the Concert Choir when she was a senior.



Cannon

Loftin



Loftin

JEAN LOFTIN was a Kappa Phi, serving as its secretary as a sophomore and its vice-president as a junior. When she was a freshman, she was in the Junior Glee Club and the Home Economics Club. She was on the Freshman Commission of the Y and was an honorary member when she was a senior. She belonged to the Methodist Student Movement and was its treasurer as a sophomore. She was a member of the Honor Club. She was junior vice-president of the Student Council and was president when she was a senior. She was a member of

the IRC, serving as its president when she was a senior. She was elected to "Who's Who" her last year.

MARY MARTIN was a Delta Phi. She was a member of the Concert Choir for two years and was its president her junior year. She belonged to the Chapel Choir, serving as its president when she was a senior. She belonged to the IRC, the MSM, and the Dance Club. She was a Curtain Raiser and was a member of Alpha Psi Omega. As a senior, she was secretary of her class and was a member of the senior sextet.



Martin

JULIA TRAYLOR was a Delta Phi serving as its president when she was a senior. She was elected "Miss Freshman," was chosen for OF and was freshman representative to the Student Council. She was sophomore representative to the Council, its secretary as a junior and senior vice-president. She was a member of the BSU, being program chairman her junior year and president her senior year. She was secretary of her class when she was a junior. As a freshman she was treasurer of the Junior Glee Club. She

was a member of the Choral Club when she was a sophomore and of the Chapel Choir and Concert Choir her last two years. She was treasurer of the Concert Choir her junior year and president her senior year. She was a member of the L Club for three years and a member of the Dance Club for two. She was a member of the IRC, being its secretary and treasurer her last year. As a junior she was assistant advertising manager of the QUADRANGLE. She was assistant advertising manager of the Scroll as a sophomore and business manager her last two years. She was chosen as a Superlative and elected to "Who's Who" her senior year.



Traylor

was a member of the Choral Club when she was a sophomore and of the Chapel Choir and Concert Choir her last two years. She was treasurer of the Concert Choir her junior year and president her senior year. She was a member of the L Club for three years and a member of the Dance Club for two. She was a member of the IRC, being its secretary and treasurer her last year. As a junior she was assistant advertising manager of the QUADRANGLE. She was assistant advertising manager of the Scroll as a sophomore and business manager her last two years. She was chosen as a Superlative and elected to "Who's Who" her senior year.

MARY EDDIE CARTER was a KTO. She was on the Inter-sorority Council when she was a sophomore and again when she was a junior. In her senior year, she was KTO vice-president. She was treasurer of the Athletic Council as a sophomore, vice-president as a junior and senior representative. She was a member of the L Club for three years. She belonged to the Curtain Raisers for three years and was treasurer as a senior. She was a member



Carter

of the Horatian Club for three years, being president her last two.



Rountree

FRANCES ROUNTREE was a Delta Phi. She was a member of the Horatian Club for three years being its secretary and treasurer her sophomore and junior years. She was vice-president of her class when she was a sophomore and a junior. Her last two years she was review editor of the Scroll. As a junior she was business manager of the QUADRANGLE and as a senior she was editor. She was on the "Scroll of Fame" and a member of the Honor Club. When she was a senior, she was vice-president of the Westminster Fellowship of Presbyterian Students. She was in the IRC her last year and the Tennis Club her last two. She was elected to "Who's Who" two years and was a Superlative when she was a senior.

MARY LAURA STARR was an AKO. She was its secretary her sophomore year and its vice-president her junior year. She represented it on the Inter-sorority Council when she was a senior. She was chosen for OF and was on the Freshman Commission of the Y. She was a member of the MSM. She was junior vice-president of the Student Council and was an honorary member her senior year. She was in the IRC and was vice-president as a junior. She sang in the Junior Glee Club her first year and in the Chapel Choir her last three.

When she was a junior, she was secretary of the Chapel Choir and she was vice-president as a senior. She was a member of the Concert Choir and the Sextet her last two years. She was a member of the Dance Club, being president her senior year. She belonged to the Tumbling Club, to the L Club her last three years, and to the Tennis Club her last two. She was junior representative to the Athletic Association and she also represented her class in the May Court that year. In her senior year she was business manager of the QUADRANGLE, was chosen as a Superlative and was elected to "Who's Who?"



STARR



Rainey

ANN RAINEY was a KTO, and was its treasurer when she was a junior. She was a member of the Home Economics Club for three years—and was its president her last two. She was president of the MSM and treasurer of the P. K.'s when she was a senior. In her junior year she was recreation chairman for the MSM. As a freshman she sang in the Junior Glee Club. She was art editor of the Scroll as a junior.

MAYRE LOU WISE was a Delta Phi. She was a member of the Horatian Club for four years. She was a member of the Camera Club her freshman year. She belonged to the MSM and was one of the P. K.'s. As a junior, she was a reporter for the Y, and as a senior, she was music chairman. She was treasurer of her class when she was a senior.



wise



1. By the lake.
 2. Could that be Gail?
 3. Tarzan Stevens!
 4. After Church.

5. Jean meditates.
 6. Tramp, Tramp, Tramp.
 7. Is this the right institution?
 8. Pasadena, here they come!

9. After vespers.
 10. Sunday afternoon.
 11. It's a hard pull.



KIRKSEY

ADAMS

WEBSTER

VINEYARD

JUNIORS

OFFICERS

MARY ALICE ADAMS	<i>President</i>
ANN WEBSTER	<i>Vice-President</i>
SUE KIRKSEY	<i>Treasurer</i>
REYN VINEYARD	<i>Secretary</i>

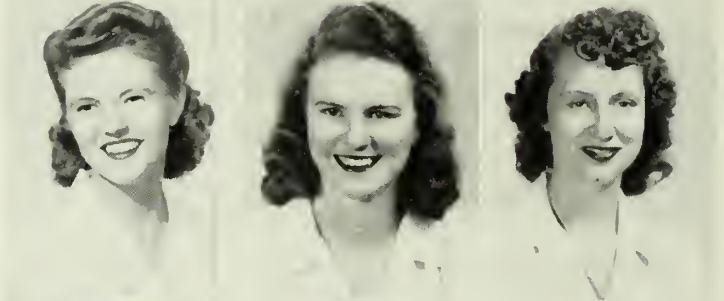
MRS. H. T. QUILLIAN *Sponsor*
 FIDELIS ADAMS Columbus, Ga.
 MARY ALICE ADAMS Royston, Ga.



LaVERNE BYARD LaGrange, Ga.
 MARION DAVIS Newnan, Ga.
 REGENE GAMBLE LaGrange, Ga.



MARY C. GILLIAM Mountville, Ga.
 KATHERINE HILL Roswell, Ga.
 NORMA B. HOWARD LaGrange, Ga.



FRANCES JENNINGS Atlanta, Ga.
 JEWELDEAN JONES Lawrenceville, Ga.
 ELIZABETH KING Woodland, Ga.

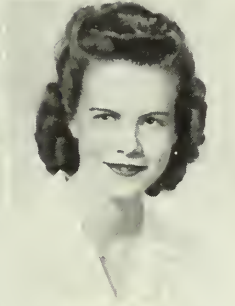
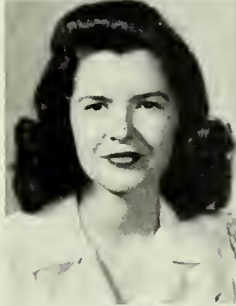


SUE KIRKSEY Reynolds, Ga.
 BETTY JUNE MARBUT Atlanta, Ga.

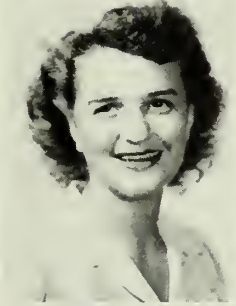




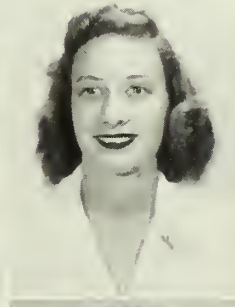
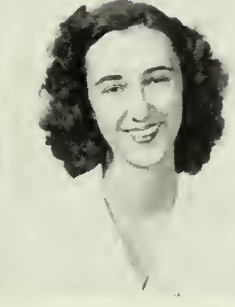
GERTRUDE McFARLAND . . . Dalton, Ga.
 JANE MILLER Young Harris, Ga.
 RUTH PRESLEY Chipley, Ga.



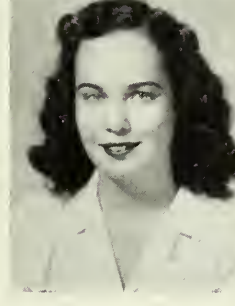
ELLEEN STARR RHODES . . . LaGrange, Ga.
 JANE SCARBORO Leslie, Ga.
 JEAN STARNES Warwick, Ga.



FRANCES STEVENS Gainesville, Ga.
 ELEANOR STRICKLAND . . . LaGrange, Ga.
 JANE ELLEN SUMMERS . . . Newnan, Ga.



REYN VINYARD Newnan, Ga.
 SUE DEE WAINWRIGHT . . . Folkston, Ga.
 ANN WEBSTER LaGrange, Ga.



GAIL WHELDON College Park, Ga.



1. "Who, me?"

2. One foot off the campus.

3. Blame it on the man shortage!

4. The charm of the woods.

5. Sally salutes.

6. Around the sun-dial.

7. Time out on the hill side.

8. Roommates.

9. Paging Robert Ripley.

10. Sophomore pulchritude.



MAXWELL

VAN HOUTEN

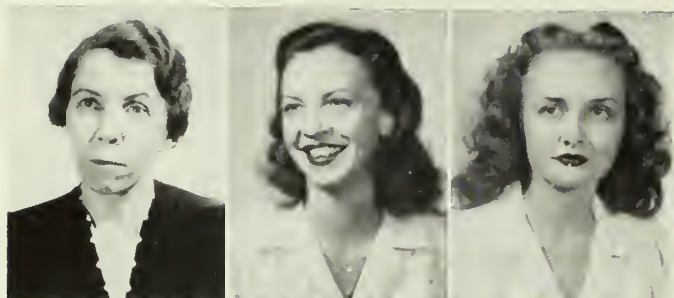
GUNTER

OUZTS

SOPHOMORES

OFFICERS

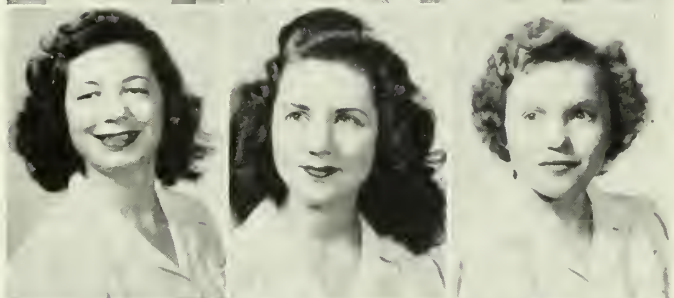
COLLEEN OUZTS	<i>President</i>
BILLIE VAN HOUTEN	<i>Vice-President</i>
FRANCES GUNTER	<i>Treasurer</i>
IMOGENE MAXWELL	<i>Secretary</i>



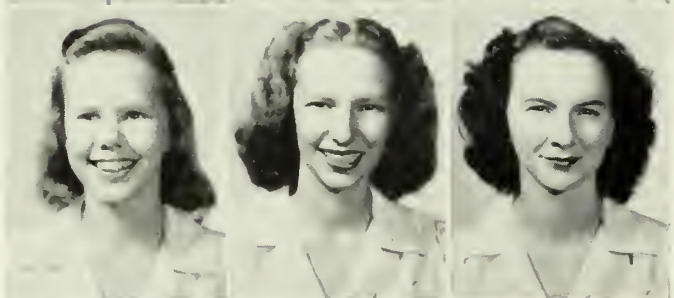
MISS KATE H. CROSS Sponsor
AMIE MARY BELL Orangeburg, S. C.
GLORIA BOWERS Hartwell, Ga.



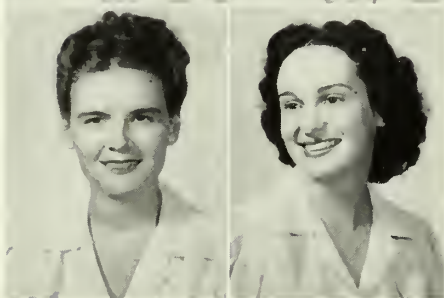
SARA FRANCES BROWN Waycross, Ga.
FLORRIE BRYAN Atlanta, Ga.
JOYCE CLARK Toccoa, Ga.



BETTY V. COX Kingston, Ga.
JACQUELINE DE LA RUE Decatur, Ga.
MARY JEAN DUNAWAY LaGrange, Ga.



LOUISE DUNSON Dalton, Ga.
CAROL FENTRESS Atlanta, Ga.
HELEN FLEMING Bowman, Ga.



BONNIE GARVER Martinsville, Ill.
JANE GOOLSBY Woodland, Ga.

WINIFRED GROOVER LaGrange, Ga.
 FRANCIS GUNTER Greenville, S. C.
 JOYCE HALSTEAD Albany, Ga.



PONCY HARMAN LaGrange, Ga.
 JANE HART Gabbettville, Ga.
 LILLIAN HILL LaGrange, Ga.



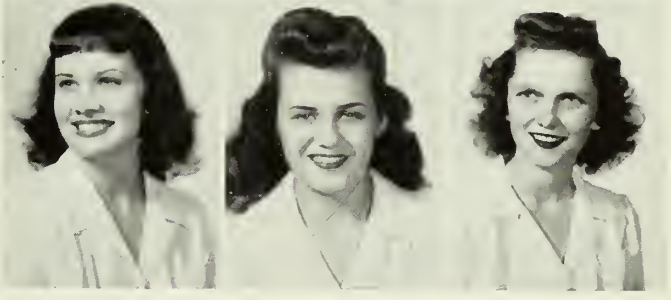
ALLENE HUDGINS Decatur, Ga.
 SUE HUTCHESON Tallapoosa, Ga.
 JANE JACKSON LaGrange, Ga.



JOYCE LIVINGSTON LaGrange, Ga.
 IMOGENE MAXWELL Griffin, Ga.
 MARGIE McDANIEL Waycross, Ga.



NANCY McLEAN Atlanta, Ga.
 BARBARA NIX East Point, Ga.
 COLLEEN OUZTS Winder, Ga.





FANNIE MAE PARKS Atlanta, Ga.
 JACQUELYNN PURCELL . . . Atlanta, Ga.
 CAROLYN REID Cusseta, Ga.

BETTYE ROGERS Sandersville, Ga.
 BETTY RUMBLE Columbus, Ga.
 JEAN SALTSMAN LaGrange, Ga.

VIRGINIA SCOTT Fitzgerald, Ga.
 ENA SMITH Dalton, Ga.
 MELBA SOKOL Hartwell, Ga.

JANET SPINKS LaGrange, Ga.
 ALICE TEAVER LaGrange, Ga.
 ELEASE TRAYLOR LaGrange, Ga.

BILLIF VAN HOUTEN LaGrange, Ga
 ELOISE WHITE Atlanta, Ga.
 MILDRED WYCKOFF Atlanta, Ga.



PRICE

LYLE

COX

LECROY

FRESHMEN

OFFICERS

BETTY COX	<i>President</i>
JUANITA LECROY	<i>Vice-President</i>
EMILY PRICE	<i>Treasurer</i>
JENNIE LYLE	<i>Secretary</i>



MISS EDITH SESSIONS Sponsor
 MARGARET ALTON Decatur, Ga.
 HELEN BAGBY Buford, Ga.

SARAH BAGWELL Alpharetta, Ga.
 ANN BLAKELY Union Point, Ga.
 BETTY JEAN BROOKS Dalton, Ga.

ANN BROOKS Ellaville, Ga.
 SARAH FLOYD BROWN LaGrange, Ga.
 ELIZABETH BUSSEY LaGrange, Ga.

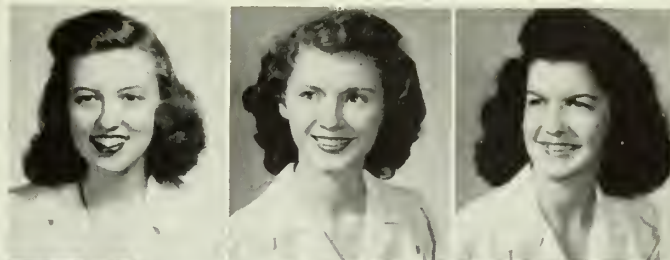
GEORGIA CALLAWAY Union Point, Ga.
 CENORA CANTRELL Marietta, Ga.
 VIRGINIA CARLOCK Kensington, Ga.

LOUISE CLAYTON Atlanta, Ga.
 BETTY JEAN COSBY LaGrange, Ga.
 CLAIRE COSPER LaGrange, Ga.

BETTYE C. COX Cave Springs, Ga.
 BARBARA CRITTENDEN Lavonia, Ga.
 MARY C. DAVID Avondale Estates, Ga.

SARA LOU DeERESE Hiram, Ga.
 ELIZABETH DFKLE Quitman, Ga.

CLARE FOSTER Dallas, Ga.
 BEATRICE GARRETT Greenville, Ga.
 JUANITA GEORGE Maxeys, Ga.



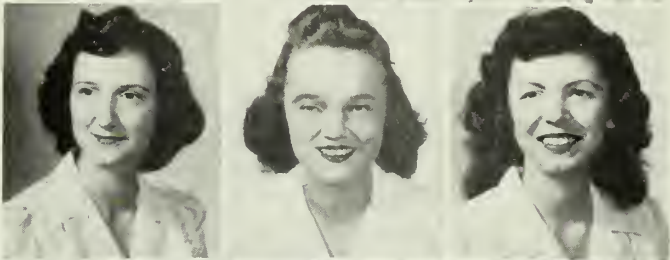
BETTY GOOLSBY Woodland, Ga.
 GRACE HARRIS Ringgold, Ga.
 MARY JEAN HOLMES Union Point, Ga.



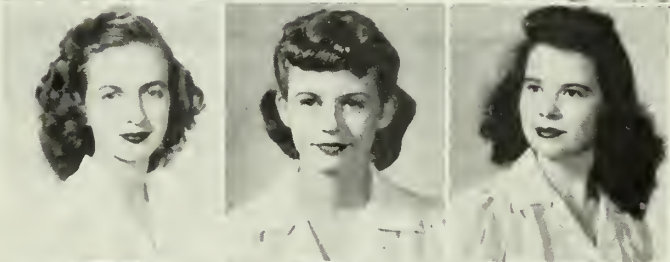
LUCY HUCKABY Atlanta, Ga.
 KATHERINE HYDE West Point, Ga.
 SARA FRANCES LANIER Hawkinsville, Ga.



JUANITA LeCROY Marietta, Ga.
 MIRIAM LOWE Midville, Ga.
 JENNIE LYLE College Park, Ga.



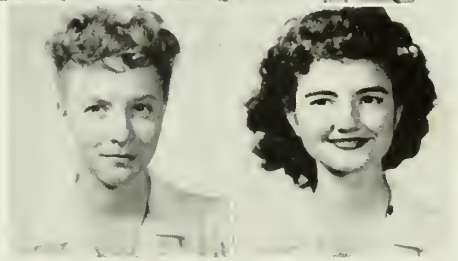
FRANKIE MARTINDALE Thomasville, Ga.
 VIRGINIA METHVIN Senoia, Ga.
 JANE MITCHAM Hampton, Ga.



MARTHA MORGAN Ellaville, Ga.
 ELEANOR PERRYMAN LaGrange, Ga.
 ANNICE PHILLIPS LaGrange, Ga.



KATHLENE POPE Glenwood, Ga.
 LOUISE POWELL Atlanta, Ga.





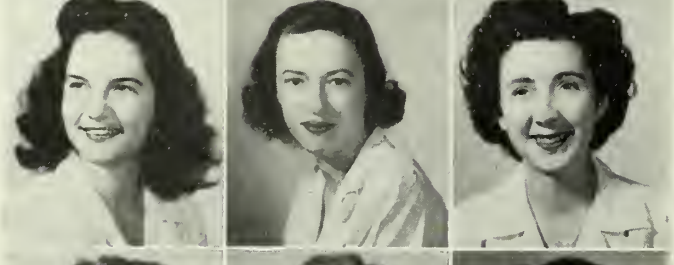
EMILY PRICE Griffin, Ga.
MARTHA RAINEY Waycross, Ga.
BONNY RIVERS Jonesboro, Ga.



AURELIA SAWYER Reynolds, Ga.
BETTE SCOTT Fitzgerald, Ga.
ALBERTA SHOUSE Madison, Ga.



CLEMENTINE SMITH Vlovilla, Ga.
MURBES SMITH Atlanta, Ga.
ANNIE BOB STANDRIDGE Decatur, Ga.



BARBARA STRAWN McDonough, Ga.
MARY K. SUMMERFORD LaGrange, Ga.
MARY F. SUMMERALL Blackshear, Ga.



VIRGINIA SUMMERVILLE Cedartown, Ga.
JOAN TUCKER Manchester, Ga.
ANNE WHITAKER Franklin, Ga.



NELL WILLIAMS Thomson, Ga.
ANN WILSON Franklin, Ga.
MIRIAM WILSON Madison, Ga.



HAZEL YOUNG Gainesville, Ga.



Activities

THE STUDEN



LOFTIN

OFFICERS

JEAN LOFTIN	<i>President</i>
JULIA TRAYLOR	<i>Vice-President</i>
REYN VINEYARD	<i>Vice-President</i>
MARY ALICE ADAMS	<i>Vice-President</i>
GAIL WHELDON	<i>Secretary</i>
ALLENE HUDGINS	<i>Treasurer</i>
BETTY LEWIS	<i>Honorary Member</i>
MARY LAURA STARR	<i>Honorary Member</i>
BETH GUNTER	<i>Senior Representative</i>
SUE KIRKSEY	<i>Junior Representative</i>
JACKIE DE LA RUE	<i>Sophomore Representative</i>
MARGARET ALTON	<i>Freshman Representative</i>
CLARE FOSTER	<i>Freshman Representative</i>



Seated: Alton, Starr, Kirksey, Hudgins, Loftin, De La Rue, Lewis, Wheldon, B. Gunter. . . . *Standing:* M. A. Adams, J. Traylor, Vineyard.

GOVERNMENT

The Student Government Association has as its purpose the maintenance of high standards of living and scholarship on the college campus.

The Student Government, through the council, attempts to guide the life of the college community.

In the fall, it is the duty of the Student Government to help the new students become adjusted to their surroundings. The orientation of the Freshmen culminates in the Junior-Freshman wedding. Membership in the Association is then granted to the Freshmen.

Founded on honor, truth, cooperation, and service, the Student Government Association aims at, not only pleasant college relations, but also training for future usefulness. Through this Association, the students gain a clearer conception of how to live honorably and unselfishly and of how to share in the responsibility of government.



LOFTIN AND TRAYLOR



M. A. Adams, Vineyard, Hudgins, Wheldon

YOUNG WOMEN

OFFICERS

- MARY LAURA STARR *President*
- JANE ELLEN SUMMERS *Vice-President*
- JACQUELINE DE LA RUE *Secretary*
- WINIFRED GROOVER *Treasurer*
- MISS KATE H. CROSS *Sponsor*
- JEAN LOFTIN *Honorary Member*
- SUE DEE WAINWRIGHT *Devotional Chairman*
- REYN VINEYARD *Social Service Chairman*
- MAYRE LOU WISE *Recreational Chairman*
- BETTY JUNE MARBUT *Reporter*
- COLLEEN OUZTS *Music Chairman*
- ALLFNE HUDGINS *Publicity Chairman*
- LUCY HUCKABY *Freshman Representative*



STARR

The Young Women's Christian Association is a voluntary religious movement that encourages Christian Youth in spiritual and social growth. It is the purpose of this organization to increase awareness among our student group and to place special emphasis upon creative living in which students find their best and truest service.

Weekday Morning Watch and Vesper services are presented by the students. It is so planned that by the end of the year, every student has participated in one of these services. Twice every month Vesper Recitals are given in Dobbs Auditorium on Sunday. Artists from LaGrange and surrounding communities give these recitals.

The new students on the Hill are pledged into the Association at a candlelight service in the fall. This year the service was given out of doors at twilight with only a lighted cross and the candles held by the cabinet as lights.



Pope, Huckaby, Lyle

CHRISTIAN ASSOCIATION

We have attempted to create more interest by working with the other religious organizations: The Methodist Student Movement, The Baptist Student Union, and The Westminster Fellowship of Presbyterian Students. The Freshman Commission, a division of the "Y," is made up of Lucy Huckaby, the Freshman Representative to the cabinet, Jenny Lyle, and Kathleen Pope.

Each year at Thanksgiving and Christmas time the entire Student Body aids the cabinet in social service activities. For Thanksgiving, we adopted the Negro Nursery of LaGrange and contributed food for that week-end. At Christmas, the traditional Christmas Tree Party was given in the dining hall for the Servant Force of the college.

Religious Emphasis Week was observed in October under the leadership of Bishop Edwin H. Hughes of the Washington Area. Also, a very successful campaign for the World Student Service Fund was carried on in November with Richard Baker as inspirational speaker.

There has been a wonderful response from the students as a whole in helping to carry on the work for the YWCA. All the services have been well attended and a greater realization of our theme and benediction has resulted.



Marbut, Wise, Loftin, Ouzts, Vineyard, Summers, Hudgin, Groover, De La Rue, Wainwright, Starr, Huckaby.

THE CURTAIN



Front row: Pope, Ouzts, Vineyard, Garver, Martindale, Starnes, B. Gunter. . . . *Second row:* Perryman, McFarland, McDaniel, Brown, Fentress, Barbour, Jennings, Carter, Arnett. . . . *Standing:* E. Smith, Garrett, Baumgardner, Hyde, Summerville, Maxwell, Fleming, Wheldon, Parks, Groover, Martin, Marbut, Summers, Lowe, A. Brooks.

"The Curtain Raisers," sponsored by and conducted through the Speech and Drama Department, is an organization devoted to the promotion of a true interest in drama and the theatre and the development of individual dramatic talent. The club, with Irene E. Arnett as its director, is composed of all speech students and other students who have qualified for membership by try-outs. All special students of the Speech Department are associate members.



BARBOUR

OFFICERS

JUNE BARBOUR	<i>President</i>
FRANCES JENNINGS	<i>Secretary</i>
MARY EDDIE CARTER	<i>Treasurer</i>

RAISERS

The year's season opened with the presentation of three one-acts: "The Legend of Camille," (which gave the girls a ample f "old-style acting"), "They're None of Them Perfect," a light comedy about young married women, and "The Forgotten Man," a poignant religious drama. After the program a reception was held in the studio.

The first three-act play was "Brief Music," a sentimental comedy of life in a women's college. This play had a unique appeal because it was "just so typical."

Ripened members of the Drama Department are the players in all major productions. The newer members gain experience through acting in laboratory one-act plays. Male roles in all productions are taken by local boys and men.

The cast of the commencement play consists solely of Alpha Psi Omega members.

At Christmas time the Curtain Raisers together with the Chapel Choir presented "Why the Chimes Rang," a histrionic adaptation of the beloved music.

The Junior Curtain Raisers also contribute their share of entertainment. They present at least one "youth" play a year and supply able talent for children's roles in other shows.

Training in radio dramatics and technique is taken care of through our weekly thirty minute radio program over Station WLAG. The radio group, with Frances Jennings as its student director this year, makes several out-of-town broadcasts each year.



Top: The Radio Theater—Barbour, Wheldon, McFarland, Starnes, Jennings.
Middle: A scene from "Brief Music" with Starnes, McFarland, Wheldon, Barbour, Vinevard, Jennings, Martin.
Bottom: S. Brown, Lowe, McFarland, and Wheldon in "Why the Chimes Rang."

THE INTERNATIONAL RELATIONS CLUB



LOFTIN

OFFICERS

- JEAN LOFTIN *President*
JEWELDEAN JONES *Vice-President*
JULIA TRAYLOR *Secretary-Treasurer*

The International Relations Club has as its purpose to study and discuss history as it is daily being made in national and international events, events that vitally affect us both in the present and in the future. The desire of the club is to develop among the students intelligent thought on modern affairs. The club is composed of girls who have indicated their interest in this phase of study by having a major or a minor in history, or by the careful study they have given the subject.

The club is under the auspices of the Carnegie Endowment for International Peace from which it receives annually eight to sixteen books of current interest in the fields of politics, economics, and history. In addition, the club is a member of the Georgia International Club.



Stevens, Rhodes, Barbour, Brannan, Murray, Jackson, Starr, Jones, Lemmon, Hudgins, Jennings, Lewis, De La Rue, E. Traylor, Martin, Rountree, J. Traylor, S. Foster, Marbut, Loftin.

THE HORATIAN CLUB

OFFICERS

MARY EDDIE CARTER *President*
MARY ALICE ADAMS *Vice-President*
ANN WEBSTER *Secretary*
WINIFRED GROOVER *Treasurer*



CARTER

"The scientific attitude is that you hold all knowledge at the mercy of new discoveries." We valued this quality of Horace so highly that we named our club for him. The Horatians are those students interested in science, and if you'll give us a chance, we'd like to interest you too. You could begin by coming to our annual open house.

For our meetings we often take field trips. However, in winter we retire to the parlor of Pitts with Miss Smith, who always has an amusing incident to tell us about her summer hospital work.



Smith, Croover, Carter, Hart, Rountree, Wise, Howard, F. Gunter, McDaniel, White, Webster, Van Houten, M. A. Adams.



ROUNTREE



STARR

FRANCES ROUNTREE
Editor

MARY LAURA STARR
Business Manager

When we set out to publish the QUADRANGLE of 1946, we thought of ourselves as pioneers—and indeed we were pioneers. Only one of us had ever been on the staff before. But we were eager to see what lay behind an annual, and we determined to get an early start. Soon we became entangled in a new vernacular. We learned a different meaning for “dummy” and became acquainted with “cuts” and “copy” and “layouts.”

Sue dreamed up clever shots—only to discover that some earlier QUADRANGLE had had her idea first. With a scrap of paper clutched in her hand, Jane Ellen pursued the seniors, pleading, “Please tell me what you are!” and then wore out her dictionary looking for new ways to say “was a member of.” Winifred and Else trod the streets in deluges of rain to seek out new ad prospects. Twink added for hours to be sure we weren’t going in the red. Jackie checked and re-checked her lists of names and addresses. Davis studied the effect of casually piled books vs. neatly stacked books before she made her sketches. Rountree lost her layouts, her dummy, and her religion any number of times and kept the neighbors awake till all hours as she typed her precious copy.

But all the difficulties we encountered serve only to make us more proud now of the job we’ve completed as we present to you the 1946 QUADRANGLE. We’ve loved building it for you. It’s your book. We hope you like it.

LITERARY STAFF

- FRANCES ROUNTREE *Editor*
- JANE ELLEN SUMMERS *Associate Editor*
- SUE KIRKSEY *Photographic Editor*
- MARIAN DAVIS *Art Editor*
- MISS CROSS *Faculty Adviser*



QUADRANGLE STAFF



Summers, Kirksey, Davis

BUSINESS STAFF

MARY LAURA STARR
Business Manager

WINIFRED GROOVER
Advertising Manager

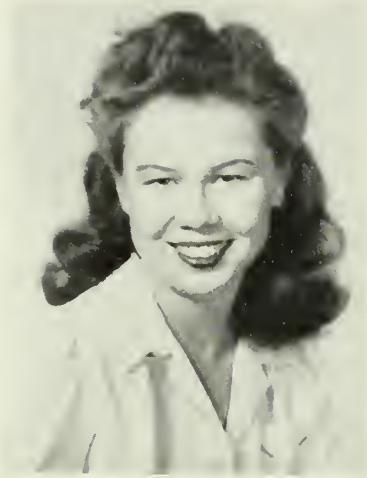
ELESE TRAYLOR
Assistant Advertising Manager

JACKIE DE LA RUE
Circulation Manager



Groover, De La Rue, E. Traylor

THE SCROLL QUILL



BARBOUR

LITERARY STAFF

JUNE BARBOUR	<i>Editor-in-Chief</i>
MAGDALEN POSEY	<i>Associate Editor</i>
FRANCES ROUNTREE	<i>Review Editor</i>
MARY MARTIN	<i>Alumnae Editor</i>
BONNIE GARVER	<i>Art Editor</i>
DR. JENNIE LEE EPPS	<i>Faculty Adviser</i>

The SCROLL is the slick paper magazine published three times a year by the students of LaGrange College. It serves as a testing ground for those girls possessed of literary aspirations and ability. Poems, editorials, feature articles, short stories, plays, and reviews may be submitted. The best are selected for publication.

Those students who have had at least three articles published in the SCROLL in one year and the members of the SCROLL staff compose the Quill Drivers Club, the L. C. literary organization. To maintain her membership

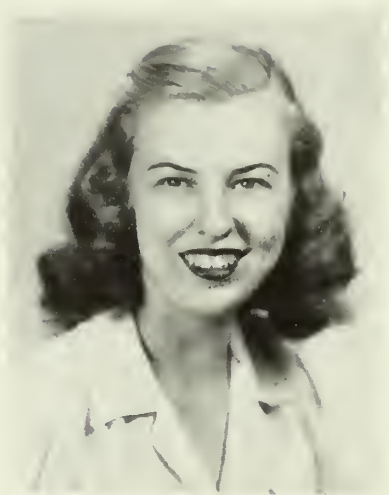


Martin, Garver, Posey, Barbour, Epps, Rountree

AND THE DRIVERS CLUB

BUSINESS STAFF

- JULIA TRAYLOR *Business Manager*
- ELLEEN RHODES *Advertising Manager*
- BILLIE VAN HOUTEN *Assistant Advertising Manager*
- ALLENE HUDGINS *Circulation Manager*
- BETTY JUNE MARBUT *Exchange Editor*



TRAYLOR

in this club, each member must continue to have three articles accepted for the SCROLL each year. In addition to the SCROLL staff, Ena Smith, Helen Fleming, and Hazel Cannon are members of the Quill Drivers Club this year.

The "Scroll of Fame" is the highest literary honor awarded at LaGrange. A group of students, never more than four in number, are chosen each year by a faculty committee on a basis of outstanding contributions to the SCROLL. Pictures of those making the "Scroll of Fame" are hung in the library.



Van Houten, Rhodes, Marbut, J. Traylor, Hudgins

THE TOWN GIRLS' CLUB

OFFICERS

REGENE GAMBLE	<i>President</i>
BILLIE VAN HOUTEN	<i>Vice-President</i>
JOYCE LIVINGSTON	<i>Secretary</i>
ANN WEBSTER	<i>Treasurer</i>

We have lost several girls to "the Hill" this year; however, more girls are dropping in the Town Girls' Room on their way to classes or just to chat. Whether they come to see us or our "pin-ups," we like for them to come, since the purpose of the club is to promote friendship between the town girls and the resident students.



Seated: Brannin, S. F. Brown, Byard, Bussey, Livingston, Howard Strickland. . . . *Standing:* Van Houten, Spinks, Cosper, Gamble, Webster, Harman, Cosby.

THE CAPITAL CITY CLUB

OFFICERS

BETTY JUNE MARBUT	<i>President</i>
JACKIE DE LA RUE	<i>Vice-President</i>
LOUISE CLAYTON	<i>Secretary</i>
FLORRIE BRYAN	<i>Treasurer</i>

The Capital City Club seeks to promote friendship among the Atlanta girls. We have very informal meetings twice a month to talk over hometown news. During the Christmas holidays we get together at "home" and have our annual banquet.



First row: de La Rue, Parks, Bryan, Hudgins, Hudgins, White, Marbut, Wheldon, K. Hill, Wyckoff, Nix. . . . *Back row:* Huckaby, M. Smith, Powell, Standridge, David, Clayton, Jennings, Barbour, Lyle.



First row: C. Foster, J. Traylor, S. Foster, Groover, Martin, Stevens, de La Rue, Starnes, Hudgins, Maxwell, Scarborough. . . . Second row: Sokol, Davis, Byard, Cosper, Starr, E. Traylor, K. Hill, Parks, Summers, Vineyard, McLean.

CHAPEL CHOIR

The Chapel Choir is a group of carefully selected voices taken from the Concert Choir and directed by Miss Elizabeth Gilbert. It specializes in sacred music and *a capella* numbers, and is noted for its harmonizing of special, intricate music which only a small group of well-trained voices can master.

The Senior Sextet, selected from upper classmen, consists of carefully blended voices. They have sung for delighted audiences throughout the state.



Davis, Maxwell, S. Foster, Starr, Martin, J. Traylor

OFFICERS

- MARY MARTIN *President*
 MARY LAURA STARR *Vice-President*
 MARIAN DAVIS *Secretary*
 REYN VINEYARD *Treasurer*



First row: Vineyard, Summers, Jones, Cox, de Freese, Sokol, Harman, S. Foster, Crittenden, C. Foster, J. Traylor, Starr, Groover, Rhodes, Cannon. . . . *Second row:* Coper, Maxwell, Wyckoff, Starnes, Parks, Davis, Stevens, McLean, K. Hill, Hudgins, Saltsman, de La Rue, Garrett, Fleming, Scarboro, Martin.

CONCERT CHOIR

The Concert Choir, under the direction of Miss Elizabeth Gilbert, is one of the busiest organizations on the hill. Having about forty members, the club has two weekly meetings. In addition to furnishing the music for the annual Christmas pageant, it gave a program of religious music at the Methodist Church.

The Junior Sextet, a popular singing group on the campus, together with their accompanist, Allene Hudgins, furnishes music for various civic organizations and churches throughout this area.

OFFICERS

JULIA TRAYLOR
President

JACQUELINE DE LA RUE
Vice-President

FRANCIS STEVENS
Secretary

IMOGENE MAXWELL
Treasurer

**Lewis Library
LaGrange College
601 Broad Street
LaGrange, GA 30240**



Vineyard, Summers, Stevens, Groover, de La Rue, K. Hill, Hudgins

METHODIST STUDENT MOVEMENT

OFFICERS

ANN RAINEY	<i>President</i>
MARY ALICE ADAMS	<i>Vice-President</i>
REYN VINEYARD	<i>Secretary</i>
JEAN STARNES	<i>Treasurer</i>
JANE ELLEN SUMMERS	<i>Worship Chairman</i>

The Methodist Student Movement is made up of all the Methodist students on the campus. The council is a group chosen by the students to lead them in religious activities here on the Hill. We are affiliated with the local church, and it is our purpose "to further Christian development everywhere."

We have sent representations to the State Student Conference at Emory, the Paine Conference, the Intercollegiate Council meetings in Atlanta, and to the National Methodist Student Conference in Urbana, Illinois. Deputations have been exchanged with numerous other colleges.

We have been actively engaged in projects and programs, and in creating an atmosphere of Christian brotherhood on our college campus, as well as in helping others the world over. This year we chose as our Fellow College the Female College in Tokyo, Japan.



Summers, Vineyard, A. Rainey, M. A. Adams, Starnes

P. K.'S

OFFICERS

JEAN STARNES *President*
ANN RAINEY *Secretary-Treasurer*
MISS PAULINE K. SMITH *Faculty Sponsor*

We are just a group of Preachers' Kids who like to get together occasionally and talk about our past experiences while living in the parsonage. We are honored in having two preacher's wives, Mary Catherine Gilliam and Carolyn Reid, in our organization this year.



First row: Gilliam, Reid, V. Scott, Perryman, M. Rainey. . . . *Second row:* Starnes, Maxwell, Powell, B. Scott, Posey, Wise.

O. F. CLUB

In this, the twelfth year of its existence, the O. F. Club still has as its purpose the promoting of true friendship on our campus. Each year not more than ten freshmen are invited to join those girls in the other classes who were selected as members in their freshman year. The girls consider membership in the O. F. Club a great honor, and strive diligently to uphold the standards by which they were selected.



First row: C. Foster, LeCroy, Perryman, Huckaby. . . . *Second row:* A. Wilson, Shouse, Alton, J. F. Gunter, Ouzts, Lowe.
Third row: Jackson, S. Foster, J. Traylor, Starr, Stevens, Hutcheson, Rumble. . . . *Fourth row:* Maxwell, Barbour, Wheldon,
Vineyard, Lyle, Cox. . . . *Fifth row:* Hudgins, Groover, de La Rue.



BARBOUR

ALPHA PSI OMEGA

OFFICERS

- JUNE BARBOUR *President*
- GAIL WHELDON *Secretary*
- GERTRUDE MCFARLAND *Treasurer*

Those members of the Curtain Raisers who meet the required qualifications are chosen for Alpha Psi Omega, a national honorary dramatic fraternity. Pledges are taken in twice a year, and each group is formally initiated at a banquet. The cast of the commencement play consists solely of Alpha Psi Omega members. By belonging to a national fraternity of this nature, we are more closely united with other colleges and dramatic departments throughout the country.



A. Gunter, Starnes, Arnett, Wheldon, Barbour, McFarland, Carter, M. A. Adams, Martin, S. Brown.



RAINEY

OFFICERS

- ANN RAINEY *President*
JANE GOOLSBY *Vice-President*
BETTY RUMBLE *Secretary*
ETHELDA PENTON *Treasurer*
ALICE TEAVER *Business Secretary*



First row: Nix, Purcell, Dunnaway, J. Goolsby, Fentress, Teaver, Durham. . . . Second row: Clark, Rumble, Bell.

CLUB

Each time we hear Kiwana-Q, we remember how grateful we are to Dr. Quillian, our president, who made it possible for a four-year course in Home Economics to be added to the college curriculum, and to the Kiwanians of LaGrange, who saw the needs of the department and saw fit to sponsor the remodeling of it. So to honor Dr. Quillian and the Kiwanians, we adopted the name Kiwana-Q. We have improved much in the past two years, and with the department under the guidance of Miss Emmie Durham we hope to improve more in the future.



M. Rainey, Alton, Presley, A. Rainey, Durham, A. Wilson, Cosby, Sawyer, Spinks

BAPTIST STUDENT UNION

OFFICERS

JULIA TRAYLOR	<i>President</i>
MARIAN DAVIS	<i>Vice-President</i>
JANE SCARBORO	<i>Secretary</i>
JEAN SALTSMAN	<i>Treasurer</i>
SARA DE FREESE	<i>Program Chairman</i>

All students of Baptist preference here on the Hill find a welcome place in our Baptist Student Union, the voluntary religious activity promoted by the Southern Baptists. As well as contributions to the World Student Service Fund and to the YWCA for the Thanksgiving basket, we have meetings from time to time when we have a short devotional and social hour.

The members are: Helen Bagby, Edna Brannan, Betty Jean Brooks, LaVerne Byard, Louise Clayton, Betty Jean Cosby, Claire Cosper, Marian Davis, Sara de Freese, Regene Gamble, Juanita George, Lillian Hill, Joyce Livingston, Barbara Nix, Jean Saltsman, Jane Scarboro, Janet Spinks, Eleanor Strickland, Julia Traylor, Ann Wilson, and Hazel Young.



Davis, Scarboro, de Freese, Saltsman, J. Traylor

WESTMINSTER FELLOWSHIP OF PRESBYTERIAN STUDENTS

OFFICERS

JACQUELINE DE LA RUE *President*
FRANCES ROUNTREE *Vice-President*
BILLIE VAN HOUTEN *Secretary-Treasurer*

The Westminster Fellowship of Presbyterian Students is an organization whose purpose it is to promote Christian fellowship among the Presbyterian students on the campus and to form a connecting link between our college and the local church. The organization is composed of those students whose religious preference is Presbyterian. Our Westminster Fellowship was represented at a conference of the Westminster Fellowship of Presbyterian Students in the Synod of Georgia in Atlanta in the fall. We have taken an active part in special projects sponsored jointly by the religious organizations on the campus. Special worship services have been given in Presbyterian churches in and about LaGrange. We seek to promote Christian growth in our individual lives.

This year the Fellowship consists of Elizabeth Bussey, Beatrice Garrett, Jane Hart, Katherine Hyde, Colleen Ouzts, Alberta Shouse, Frances Stevens, Murbes Smith, Alice Teaver, Gail Wheldon, Eloise White, Jacqueline de La Rue, Frances Rountree, and Billie Van Houten.



Rountree, Van Houten, de La Rue

THE ART CLUB



Brannan, Shouse, A. Wilson, M. Rainey, Sawyer, Garver, Mrs. Williams, Gamble, Purcell, Teaver, Rumble, Clark, Gorman, Fleming.

OFFICERS

REGENE GAMBLE	<i>President</i>
ETHELDIA PENTON	<i>Vice-President</i>
HELEN FLEMING	<i>Secretary</i>
JOYCE CLARK	<i>Treasurer</i>

The Art Club's goal is not only understanding and appreciation of art, but also fellowship among its members. Exhibits and lectures by such well-known artists as LaGrange's Lamar Dodd arouse our own and others' interest in art.

Our monthly meetings are used for study of different artists. This year our attention is focused particularly on South American art.

From our sponsor, Mrs. Williams, comes the inspiration for our success.



SORORITIES



First row: B. Gunter, J. Traylor, Bryan, Starr. . . . Second row: I. Hill, Kirksey, Groover, M. A. Adams.

INTER-SORORITY COUNCIL

OFFICER

WINIFRED GROOVER *President*

The Inter-Sorority Council strives to increase cooperation among the sororities. It controls the giving of rush parties and the issuing of sorority bids. Members of the council are the president and one representative from each sorority.

ALPHA KAPPA THETA

OFFICERS

SUE KIRKSEY *President*
 B. J. MARBUT *Vice-President*
 KATHERINE HILL *Secretary*
 ALLENE HUDGINS *Treasurer*



KIRKSEY

*"When fun and duty clash,
 Let duty go to smash."*

We, the AKO's, have really carried out our motto this year, with fun as our main objective at the parties held twice each month. Miss Lemmon, our new sponsor, is always at hand with suggestions and ideas to help us in everything we undertake.

This year, for the first time in recent years, we AKO's may be identified by our sorority pins of which we are very proud.



First row: McFarland, Gorman, Cannon, LeCroy, Garver, Reid, Fleming, Morgan, A. Brooks, Harris.
Second row: Hudgins, Marbut, M. Wilson, Wheldon, Cox, Whitaker, Kirksey, Shouse, K. Hill.
Third row: Starr, Lowe, C. Smith, Jones, Miller, Baumgardner, Wainwright, Carlock, Bowers; Hart.

KAPPA TAU THETA



GROOVER

OFFICERS

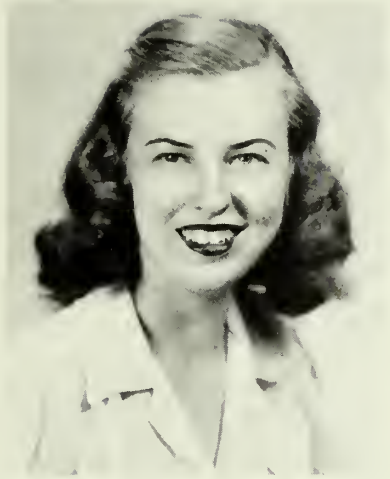
WINIFRED CROOVER	<i>President</i>
MARY E. CARTER	<i>Vice-President</i>
ELESE TRAYLOR	<i>Secretary</i>
MARIAN DAVIS	<i>Treasurer</i>

"We just called up to tell you that we're KTO,
 KTO on the Hill, or wherever we go—
 Though other chapters are good,
 Just let us tell you this, Joe,
 You'll never find another like the KTO!"



First row: Hyde, Lanier, Blakely, Summerall, Callaway, Cox. . . . *Second row:* Byard, Gamble, Webster, White, Groover, M. Rainey, Perryman, George, Holmes. . . . *Third row:* A. Wilson, Brannan, Bussey, de la Rue, Saltsman, Rivers, Parks, Summerville. . . . *Fourth row:* Sokol, Davis, Dekle, Brown, Young, B. Scott, M. Smith, Garrett, Howard, Tucker. . . . *Fifth row:* F. Adams, Teaver, Livingston, Van Houten, Carter, David, L. Hill.

DELTA PHI DELTA



TRAYLOR

OFFICERS

JULIA TRAYLOR	<i>President</i>
BETTY LEWIS	<i>Vice-President</i>
COLLEEN OUZTS	<i>Secretary</i>
IMOGENE MAXWELL	<i>Treasurer</i>

In the twentieth year of its existence, the Delta Phi Delta sorority is still living up to its motto: "to have the best time possible."

Donning our purple and white caps, we Delta Phi's and Madame, our loyal sponsor, set as our goal the best year yet. With our rush party, the new wearers of caps, and our banquet we think we succeeded.



First row, seated: Purcell, Dunson, Fentress, Rogers, Nix, Martin, Wise. . . . *Second row, seated:* Ouzts, Bryan, Jackson, S. Brown, McDaniel, Wyckoff, J. Goolsby, Rumble, Lewis, Bell, King. . . . *Standing:* Maxwell, McLean, Scarboro, Barbour, Rountree, Clark, Hutcheson, J. Traylor, Stevens, S. Foster, C. Foster, Crittenden, Standridge, Rhodes.

KAPPA PHI DELTA



GUNTER

OFFICERS

BETH GUNTER	<i>President</i>
REYN VINEYARD	<i>Vice-President</i>
JANE ELLEN SUMMERS	<i>Secretary</i>
ENA SMITH	<i>Treasurer</i>

Kappa Phi Delta means to us fun, friends, and good food. We had a grand time welcoming the new girls this year. Our loyalty is expressed in our motto, "Kappa Phi Delta forever." The highlight of activities is our annual banquet. Miss Epps as our sponsor is a gem.



Seated: E. Smith, Summers, Vineyard, B. Gunter, M. A. Adams, Gilliam, Posey, F. Gunter, Alton. . . *Standing:* Powell, Mitcham, Bagby, Martindale, de Freese, Presley, Methvin, Cantrell, Price, Starnes, Loftin.



Athletics

THE ATHLETIC ASSOCIATION



Wilson, Carter, Rhodes, Kirksey, Hutcheson, Lewis, Stevens, Ouzts.

OFFICERS

BETTY LEWIS	<i>President</i>
FRANCES STEVENS	<i>Vice-President</i>
SUE KIRKSEY	<i>Secretary</i>
SUE HUTCHESON	<i>Treasurer</i>
MARY EDDIE CARTER	<i>Senior Representative</i>
ELLEEN RHODES	<i>Junior Representative</i>
COLLEEN OUZTS	<i>Sophomore Representative</i>
ANN WILSON	<i>Freshman Representative</i>
EDITH SESSIONS	<i>Sponsor</i>

The promotion of interest in athletics, the development of a spirit of good sportsmanship, and the development of the physical side of the individual are the aims of the Athletic Association.

We are assured of the latest trends in athletics through our membership in the Georgia Federation of College Women.

The Athletic Association arranges a program to help the girls have fun, fellowship, and friendship while keeping fit.



LEWIS

THE "L" CLUB



Wheldon, Vineyard, E. Smith, Rhodes, Starnes, Barbour, Hart, Ouzts, Kirksey, Carter, Stevens, Lewis, J. Traylor, Rumble, Summers, Starr.

The "L" Club is composed of those girls who have received college letters. These letters are awarded each year to the ten girls who have the highest number of points. Points may be acquired by keeping health month and by participating in various sports.

THE TENNIS CLUB

The Tennis Club is one of the newest clubs on the Hill. The members may be recognized by their "T's" which are given to those girls who have ability, good form, and interest in tennis.



Ouzts, Nix, Rountree, Lewis, Starr, Kirksey, S. Foster.



Clockwise: F. Adams, Starr, Rhodes, Dunson, Bryan, Alton, Kirksey, de La Rue, L. Hill, Lewis, Saltsman, Standridge.

THE DANCE CLUB

OFFICERS

MARY LAURA STARR	<i>President</i>
FRANCES STEVENS	<i>Secretary</i>

The Dance Club was organized several years ago for the girls on the Hill who are interested in interpretative dancing. We meet every Tuesday afternoon in the gym. There, with the help of Miss Sessions, our director, we spend an hour in limbering-up exercises and creative work.



First row: Starr, F. Adams, Bryan, Dunson. . . . *Second row:* Rhodes, Stevens, Standridge, Alton. . . . *Third row:* Kirksey, de La Rue, Lewis, L. Hill, Saltsman.



LeCroy and Lowe watch while C. Foster and Carlock take on Crittenden and Shouse in a snappy game of ping pong.



LeCroy and Lowe accumulate points.



Rountree, Starr, Lewis, and S. Foster, a frequent foursome on the tennis courts.



Starr, Stevens, and Lewis get an upside-down view of things from the bars.



C. Foster and A. Wilson try their hands at shuffleboard.



Volleyball for fun and points—Whitaker, Alton, A. Brooks, Summerall, Hyde.



Features

Our Superlatives

The Superlatives are our choice, by vote of the student body, of the girls on the Hill who best represent the true spirit of LaGrange College and its ideals. Because of their outstanding participation in campus activities, we bestow this high honor upon them.

Miss LaGrange College is chosen from the senior class. We feel that she is the one who most truly possesses the spirit of L. C., which includes love, loyalty, service, and sacrifice.

The five Superlatives are chosen from the sophomore, junior, and senior classes at large.

We select as Miss Freshman the girl who we think has the characteristics of an ideal freshman.

We are honored to present to you our Superlatives. We hope that you share this pride with us.



Miss LaGrange College

JUNE BARBOUR



JULIA TRAYLOR



MARY LAURA STARR



FRANCES ROUNTREE



BETTY LEWIS



MARY ALICE ADAMS



Miss Freshman
CLARE FOSTER

WHO'S WHO



J. Traylor, Barbour, Rountree, Starr, Loftin

WHO'S WHO AMONG STUDENTS IN AMERICAN UNIVERSITIES AND COLLEGES is a publication in which appear the biographies of outstanding students selected from six hundred schools in the country. This recognition is the culmination of all college honors and achievements. Nomination is based upon character, scholarship, leadership in extra-curricular activities, and potentiality for future usefulness to business and society. Juniors, seniors, and students in advanced work are eligible.

This year LaGrange College is represented by June Barbour, Jean Loftin, Mary Laura Starr, and Julia Traylor who appear for the first time, and Frances Rountree who was named last year.

Advertisements

THE CITY
OF
LAGRANGE

DANIEL LUMBER
COMPANY

LAGRANGE

GEORGIA

HAMMETT AND GROOVER

AMBULANCE SERVICE

Phone 183

LAGRANGE

GEORGIA

WOODING'S

College Fashions

LAGRANGE

GEORGIA

COMPLIMENTS OF...

S. H. KRESS & COMPANY

LAGRANGE, GEORGIA

"Watch Kress Windows"

5c-10c-25c STORE

Y O U N G ' S

Style Without Extravagance



LADIES' APPAREL



Phone 167

Ridley Ave.

SHOP AT...

MANSOUR'S



LAGRANGE

GEORGIA

LAGRANGE BAKING CO.

EAT GOLDEN CRUST BREAD

Phone 911

Special Orders Appreciated

PIKE'S

Flowers For Every Occasion

16 N. Court Sq.

Phone 711

DARDEN-PATTILLO, INC.

"Yours for Happy Feet"

HINSON FURNITURE CO.

LAGRANGE

GEORGIA

DAVIS PHARMACY

"EVERYBODY'S DRUG STORE"

LaGrange, Ga.

Phone 263

COMPLIMENTS OF

LAGRANGE IRON WORKS

J. M. CHAPMAN CO.

108 BULL ST.

616 LINCOLN ST.

CLEVELAND-DODD CO.

LADIES' SHOES AND HOSIERY

LAGRANGE

GEORGIA

Phone 1477

109 Greenville St.

MURPHY AND JORDAN

Owned and Operated by
Robert Murphy and John H. Jordan

AUTO SALES

LAGRANGE

GEORGIA

LAGRANGE BANKING CO.

South Court Square

LAGRANGE

GEORGIA



*Member of Federal Deposit
Insurance Corporation*

**RHODES-PERDUE
FURNITURE CO.**

Originators of
INSTALLMENT PLAN OF
SELLING FURNITURE

**BELK-GALLANT
COMPANY**

- LaGrange, Georgia
 - Newnan, Georgia
 - West Point, Georgia
 - Covington, Georgia

COMPLIMENTS OF
STRONG'S

108 Main St. LaGrange, Ga.

SERVICE COAL COMPANY

LaGRANGE GEORGIA

1856 90th Anniversary 1946

LEHMANN JEWELRY CO.

LaGRANGE GEORGIA

COMPLIMENTS OF

AMERICAN SERVICE CO.

ICE COAL

IDEAL LAUNDRY

214 GREENVILLE PHONE 1220

"IF IT'S HARDWARE
WE HAVE IT"

LAGRANGE HARDWARE CO.

**MARY ALICE'S BEAUTY
SHOPPE**

LaGRANGE GEORGIA

HUDSON HARDWARE CO.

109 MAIN STREET
LaGRANGE GEORGIA

NEHI BOTTLING CO.

—
ROYAL CROWN COLA
—

PHONE 649

COMPLIMENTS OF

DIX, FLORIST

100 E. HARALSON ST.

LaGRANGE GEORGIA

THE
Dixie

COTTON MILLS

•
LAGRANGE
GEORGIA

•
NEWMAN
CONSTRUCTION
COMPANY
•

CLEMONS DRUG
STORE

•
"MAKE OUR STORE YOUR
DRUG STORE"

CULPEPPER & SON

•
WHOLESALE
GROCERS
•

LAGRANGE GEORGIA

P E N N E Y ' S

•
WHERE SAVINGS
ARE GREATER
•

LAGRANGE GEORGIA

COURT SQUARE
PHARMACY

"YOUR REXALL STORE"

LAGRANGE GEORGIA

LAGRANGE LAUNDRY
SANITONE CLEANERS

Phone 129
•

"Bundles for Satisfaction"

**BIG STAR SUPER
STORE**



"DAILY SAVINGS ON WELL-
KNOWN BRANDS"

LAGRANGE JEWELRY CO.

GIFTS • JEWELRY

115 Main St.

Phone 1730

LAGRANGE

GEORGIA



LAGRANGE OPTICAL CO.

115 Main Street

Phone 1730

LAGRANGE

GEORGIA

THE CITIZENS & SOUTHERN BANK

OF LAGRANGE

LAGRANGE, GEORGIA

NO ACCOUNT TOO LARGE

NONE TOO SMALL

Member F. D. I. C.

WLAG

VOICE OF LAGRANGE

« : »

LAGRANGE

GEORGIA

LAGRANGE
THEATER



LAGRANGE

GEORGIA



Drink

Coca-Cola

TRADE-MARK

Delicious and
Refreshing

“IF IT’S GOOD GROCERIES—
IT IS FROM

LAGRANGE GROCERY
COMPANY

WHOLESALE GROCERS



Since 1904

*Compliments
of*

**THE LIONS'
CLUB**



*Compliments
of*

**THE KIWANIS
CLUB**



COMPLIMENTS
OF

**THE
JUNIOR CHAMBER
OF COMMERCE**



Compliments of

THE ROTARY CLUB

HIGGINS BEAUTY SHOP

103 Ridley Ave.

Phone 200

CREDIT JEWELERS

**CRAWFORD JEWELRY CO.,
INC.**

"YOUR JEWELERS"

LaGrange Theater Building

LAGRANGE

GEORGIA

TASTY COFFEE SHOP
GOOD FOOD

Prompt Service Moderate Prices

PERKERSON BROTHERS
DRY CLEANERS

209 Greenville St

Phone 972

COMPLIMENTS
...OF...

PARKER FURNITURE
COMPANY

LAGRANGE

GEORGIA

HUNTER-OWENS FURNITURE
COMPANY

FURNITURE and STOVES
Telephone 307 31 Court Square

113 Vernon St.

Phones 503-504

DANIEL GROCERY CO.

"The Fancy Grocers of LaGrange"

Where Quality and Service Is An Actuality

LAGRANGE, THE CITY OF ELMS AND ROSES, is proud of her industries and commercial establishments, her lovely old homes, splendid schools, and beautiful churches. And yet, the crowning jewel in her diadem of radiant possessions is LaGrange College.

THE CITY OF LAGRANGE has long been noted for the charm and culture of its environment. For over one hundred years LaGrange College, in its dedication to Christian Culture, has made its contribution to the life of the community.

We are proud of the college and appreciate all that it means to the civic, professional, religious, and cultural life of LaGrange.

LAGRANGE CHAMBER
OF COMMERCE

THE
DUNSON MILLS

LAGRANGE, GEORGIA

MANY YEARS AGO LAGRANGE was named by one of her first citizens "The City of Elms and Roses;" since that time she has also become the CITY OF COTTON MILLS; and her residents may justly feel a pride in either name.

THE DUNSON MILLS lie on the eastern edge of the city, between the Atlanta and West Point Railroad and the Atlanta Highway, Route 14. Its buildings and the grounds are among the most attractive in the South today. The main mill building and offices are surrounded by a wide expanse of velvety lawns, green the year round, and appropriately planted with flowering and evergreen shrubs. The mill building is of red brick with white trim, and has a base planting of shrubbery. The tenement village has some three hundred houses of three and four-room types, at all times kept freshly painted white, with green trim. Every home is provided with electric lights and running water and has ample room surrounding it for flowers and vegetable gardens, chickens and a cow if desired. The City of LaGrange last year erected in our village a most modern and commodious Grammar School Building for the children in our section. The school is equipped with a splendid kitchen and cafeteria, and has a beautiful auditorium. The Company operates at its own expense a well-equipped kindergarten for the small children. The Company also furnishes a two-story brick building for use as a meeting place for clubs, lodges, and community gatherings.

A full-time graduate nurse is regularly employed by the Company for the welfare of its employees and their families, and group life insurance at a very low rate is provided for all who wish it.

The Company a few years ago built two modern brick churches, one of Old English and one of Colonial design, and besides furnishing light, heat and janitor service for the congregations using them, also contribute substantially to the support of their resident pastors.



The Dunson Mills extend greetings and good wishes not only to the LaGrange College seniors of 1946 but to all the girls on the hill.

ELM CITY WOOD AND
COAL COMPANY



401 Main

Phone 66

MCLELLAN'S

...FOR...

BETTER VALUES

Prompt and Courteous Service

LAGRANGE

GEORGIA

HOTEL
COLONIAL



LAGRANGE

GEORGIA

HUTCHINSON-TRAYLOR
INSURANCE COMPANY



LAGRANGE

GEORGIA

COMPLIMENTS OF
CHATTAHOOCHEE LUMBER
COMPANY



PHONE 178

LAGRANGE, GEORGIA

Photography

by

DAVIS STUDIO

LaGrange, Georgia



Quadrangle negatives are
kept in files and pictures
may be obtained at any
time in the future.

LAGRANGE COLLEGE



The charm of the old is happily blended with the challenge of the new in the atmosphere of Christian culture at LaGrange College; with modern and comfortable residence halls, excellent courses in domestic, commercial, and fine arts, and a standard curriculum leading to the Bachelor of Arts degree. Expenses moderate.

For Further Information Address

HUBERT T. QUILLIAN, *President*

LAGRANGE COLLEGE

Compliments

of

CALLAWAY

MILLS



LAGRANGE • GEORGIA

WILKES SERVICE STATION

201 Ridley Avenue

LaGRANGE

GEORGIA

J. C. VAN HOUTEN, INC.

RADIO SERVICE AND SALES

LaGRANGE

GEORGIA

CHARM BEAUTY SHOP

109 Ridley Ave.

Phone 1519

OLIVER GROCERY

110 Ridley Ave.

Phone 1179

TROUP ICE COMPANY

Corner of Morgan and Hines Streets

ICE AND COAL

Phone 722

LaGrange, Ga.

KING PRINTING CO.

COMMERCIAL PRINTING AND
OFFICE SUPPLIES

Phone 907

LaGrange, Ga.

Compliments of

**LAGRANGE FREEZE PLANT,
INC.**

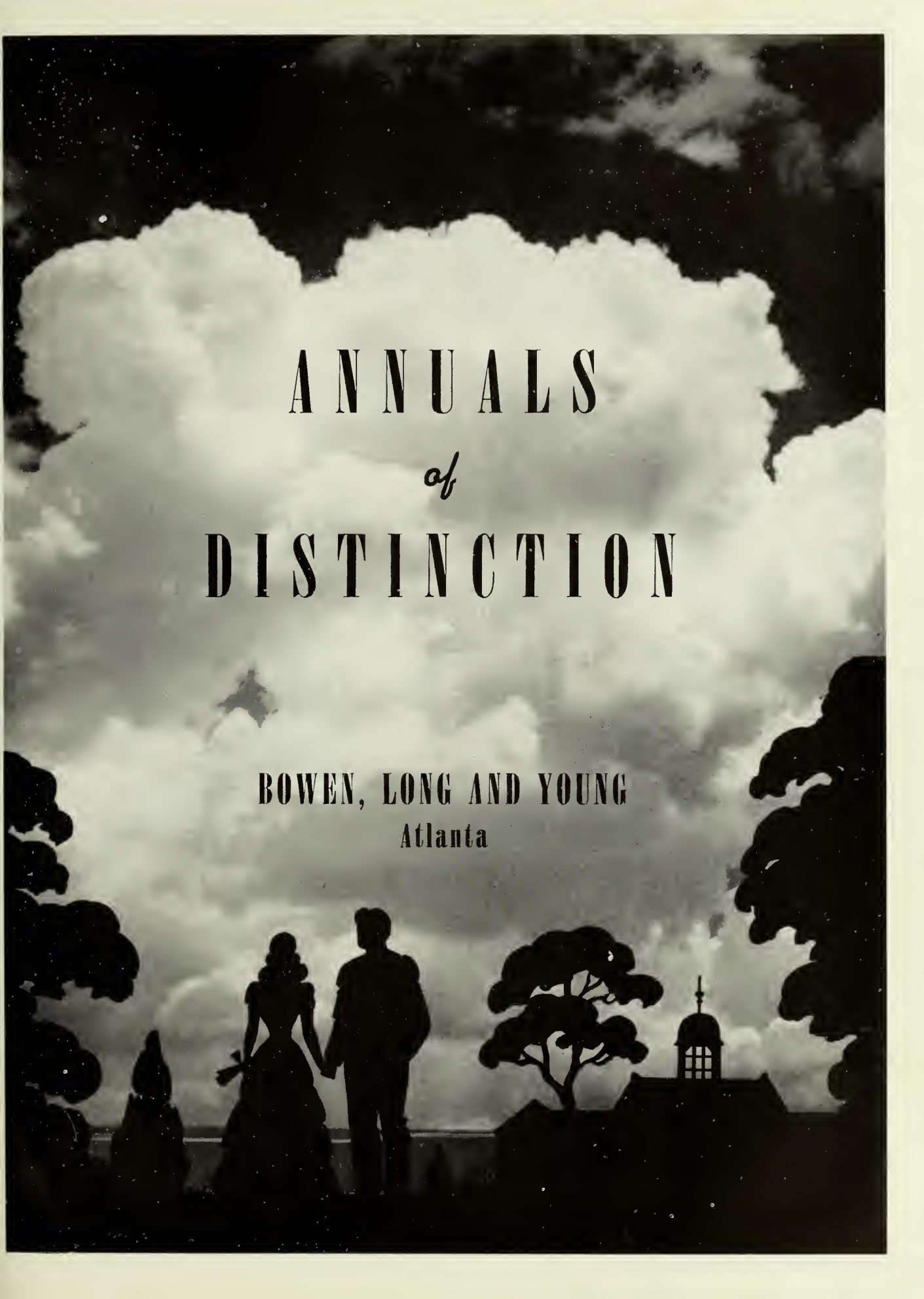
Compliments of

**TROUP COUNTY ELECTRIC
MEMBERSHIP CORP.
R E A**



1. Must you, Martin? . . . 2. Proud papa. . . 3. Faculty Adviser. . . 4. Charming roommates. . . 5. Second childhood so soon? . . Pyramid.





ANNUALS
of
DISTINCTION

BOWEN, LONG AND YOUNG
Atlanta



**Lewis Library
LaGrange College
601 Broad Street
LaGrange, GA 30240**

